



First Floor



Site Plan



Ground Floor



The site plan and floor plan are not to scale; measurements are indicative and in metres. Bushes and trees are placed for illustration purposes. Plans should not be relied on. Interested parties should make and rely on their own enquiries. All other information provided has been collected from reliable sources but cannot be guaranteed for accuracy.

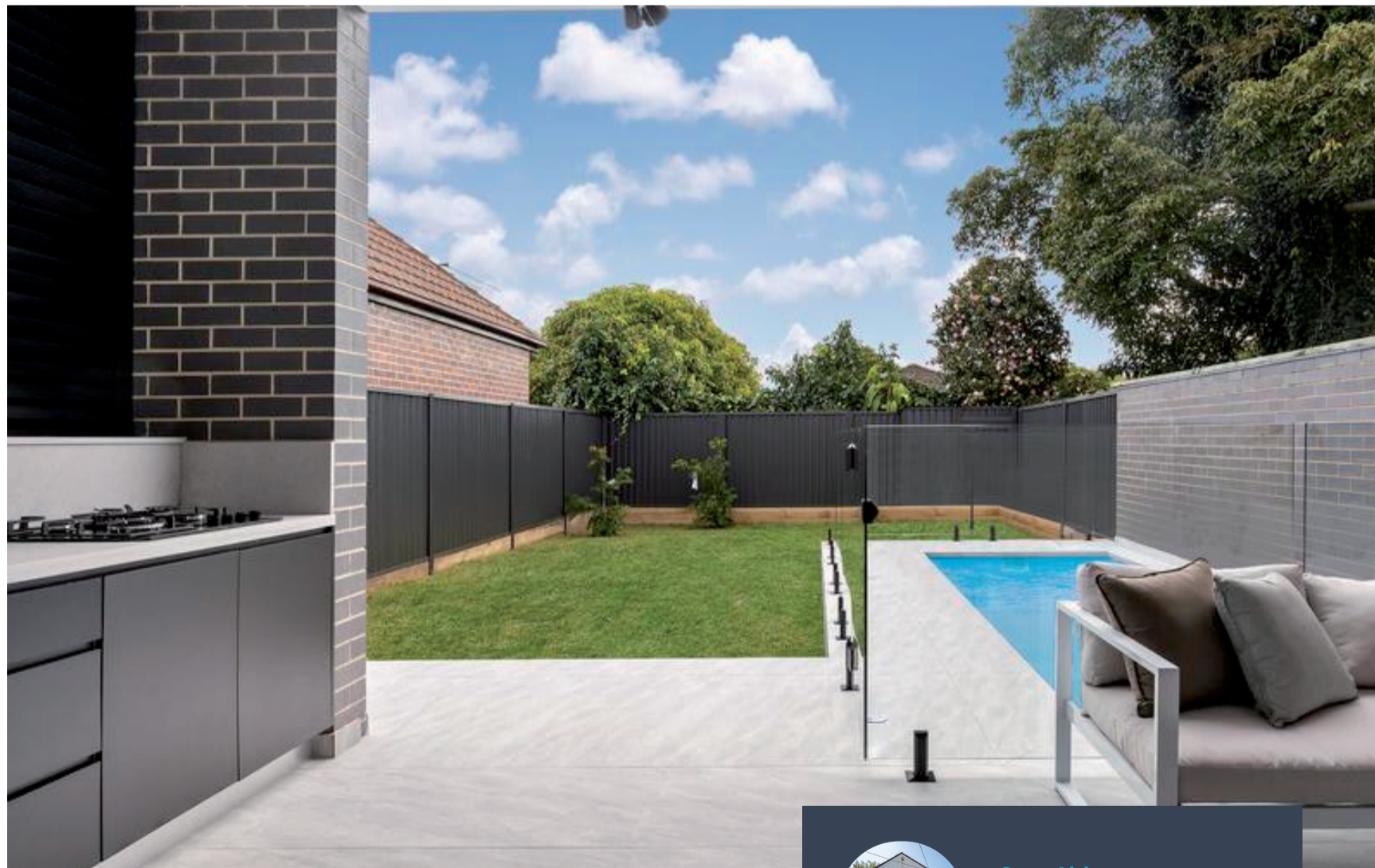
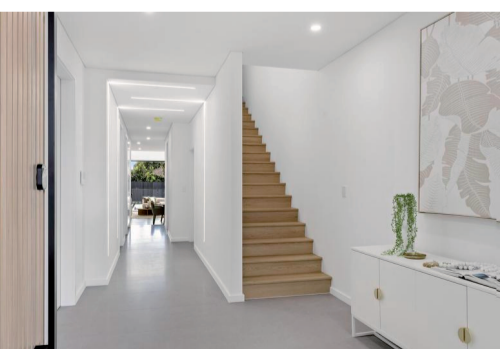


Luxurious Duplex

153

9171 2888
 stonerealestate.com.au





Brand-new luxury duplex

Every detail has been carefully considered in crafting this superb residence, presenting its new owner with the privilege of a ready-made, brand-new dream home.

- Stone benchtops, dishwasher, gas cooktop, WIP
- LUG with internal access, plus driveway parking
- Peaceful walk-everywhere location, 10km from the CBD



Sam Abbas
0406 750 075

Melanie Marques
0402 350 734

stonerealestate.com.au