



**Luschwitz**  
REAL ESTATE



Superb Freestanding Home in Prestigious Over 55's Complex  
**2 Eden Vale Close. St Ives**

3  2  2 

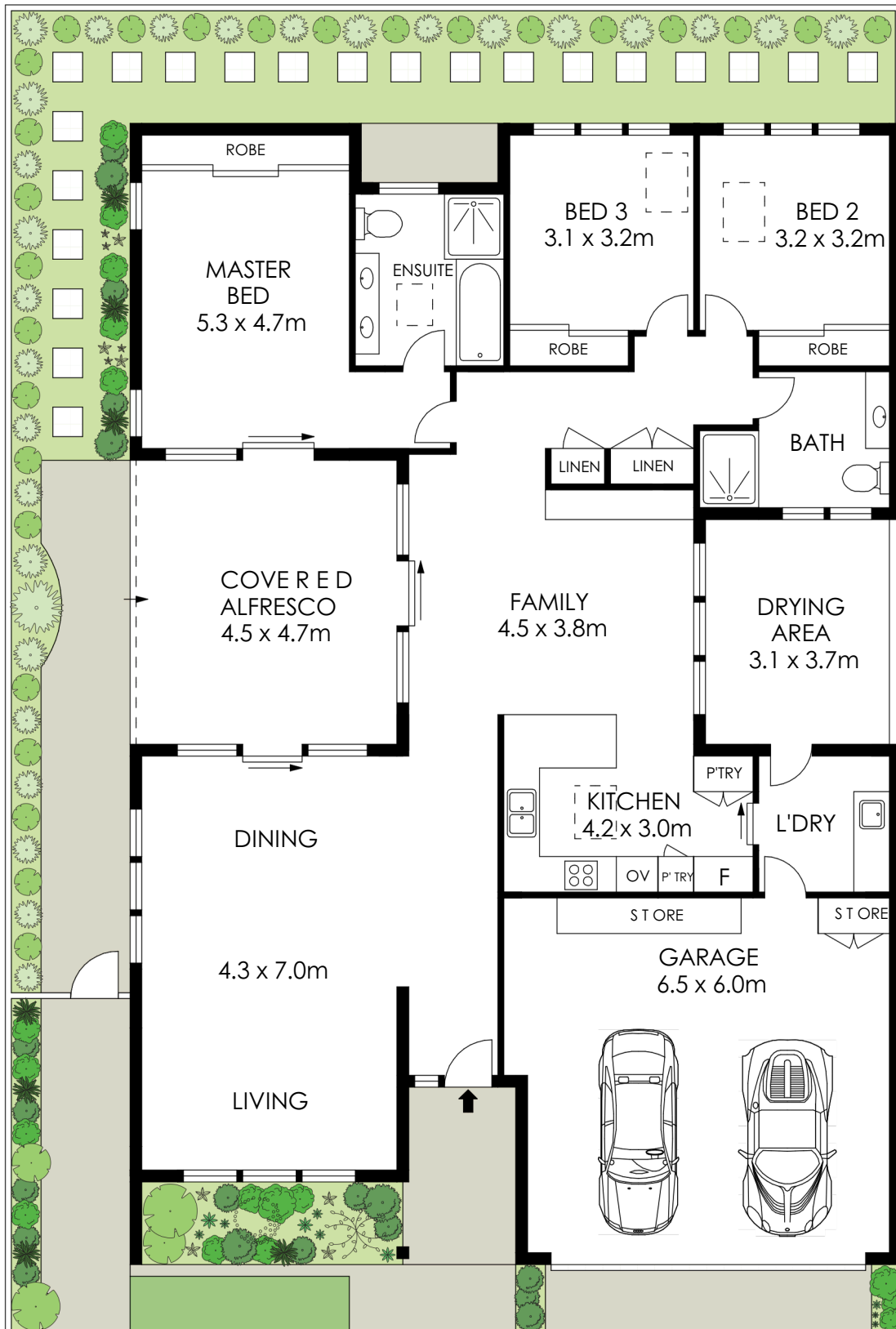
Beautifully presented, this stunning, single level, Mirvac built Villa is the perfect option for the discerning downsizer.

The generous entertaining flows to relaxed alfresco living, complete with Vergola and sunny North aspect. The home features an impressive lounge and dining and a spacious stone kitchen with Miele appliances that adjoins the family room and casual dining.



**Stephen Sales | 0411 747 888 | [stephen@luschwitz.com.au](mailto:stephen@luschwitz.com.au)**

**Josh Luschwitz | 0412 067 676 | [josh@luschwitz.com.au](mailto:josh@luschwitz.com.au)**



GROUND LEVEL



APPROX. RESIDENCE AREA = 186 m<sup>2</sup>

PLANS SHOWN ONLY INDICATIVE OF LAYOUT. DIMENSIONS ARE APPROXIMATE.

2 Eden Vale Close, St Ives



**Luschwitz**  
REAL ESTATE